

Figure 1. Schematic diagram of 5-resonator cw filter

CW FILTER DESIGNS USING MODIFIED 88-mH  
COILS FOR L2 & L4

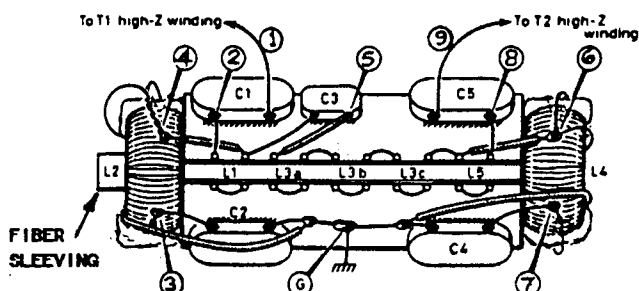
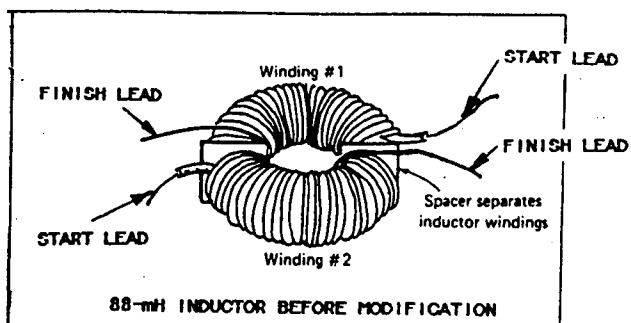


Figure 2. Pictorial diagrams showing the L2 and L4 lead connection and the wiring of the inductor stack.

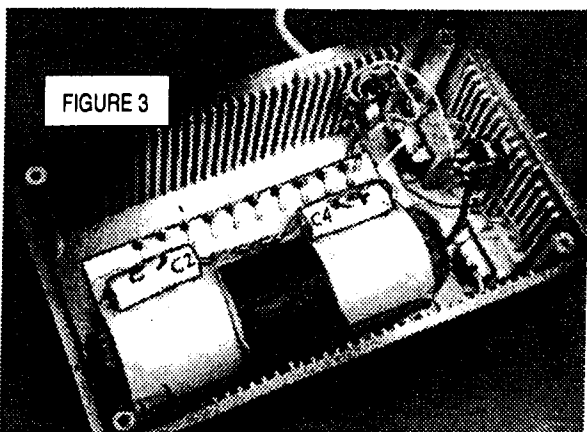


Figure 3. The assembled filter is shown installed in a Jameco H2851 plastic box.

Table 1. Node-Node Resistances for the narrowband CW filter

NODES		COMPONENTS	RESIST. (Ohms)
From	To		
1	GND	T1 Hi-Z Windng	12.0
2	GND	L1 + 1/2(L2)	10.2
3	GND	L2	4.4
4	GND	1/2(L2)	2.2
5	GND	L3 + 1/2(L4)	26
6	GND	1/2(L4)	2.2
7	GND	L4	4.4
8	GND	L5 + 1/2(L4)	10.2
9	GND	T2 Hi-Z Windng	12.0
2	4	L1	8.0
5	6	L3	24
6	8	L5	8.0
2	3	L1 + 1/2(L2)	10.2
8	7	L5 + 1/2(L4)	10.2

NOTES:

1. See Figures 1 and 2 for the filter Nodes From-To locations.
2. Check your wiring using the resistance values in Table 1. If there is more than a 20% difference between your measured values and the table values, you may have a wiring error.
3. For accurate measurements, use a digital volt-ohmmeter or an analog V-O-M (Triplett Model 630 or equivalent) that has a scale center of about four ohms on the X1-ohm range.

Ed Wetherhold, W3NQN  
1426 Catlyn Place  
Annapolis, MD 21401  
TEL: (410) 268-0916  
FAX: (410) 268-4779

14 MAY 2002